

考試編碼:70-497

**考試名稱: Software Testing with
Visual Studio 2012**

版本: Demo

QUESTION: 1

You are using Microsoft Visual Studio 2012.

A requirement has been removed and you need to update the five corresponding test cases to reflect this by changing their state.

You need to simultaneously update the state of these five test cases.

What are two possible ways to accomplish this goal?

(Each correct answer presents a complete solution. Choose two.)

- A. In Team Explorer, run a query that returns the five test cases. In the Results pane, highlight all five test cases and click Refresh.
- B. In MTM, run a query that returns the five test cases. In the Results pane, highlight all five test cases and click Run.
- C. Navigate to Web Access, run the query that returns the five test cases, select the five test cases, and edit selected work items.
- D. In Microsoft Excel, open a query that returns the five test cases. Update the State field of all of the work items. Click Publish.
- E. In Team Explorer, run a query that returns the five test cases. In the Results pane, update the state and save each test case.

Answer: C,D

Explanation:

* In Team Explorer, we can query the work item databases by using a new query language Microsoft provides: Work Item Query Language (WIQL), which has a SQL-like construct. From Team Explorer or Web Access we can create new queries or modify existing ones.

* You can make bulk updates to many work items at a time by using Team Web Access, Office Excel, or Office Project.

QUESTION: 2

You are using Microsoft Test Manager (MTM). You are using the Microsoft Solution Framework (MSF) for Agile Software Development process template. Your team has all required permissions to run the reports on the SharePoint project portal.

You need to track the progress on resolving bugs by your team for the past week.

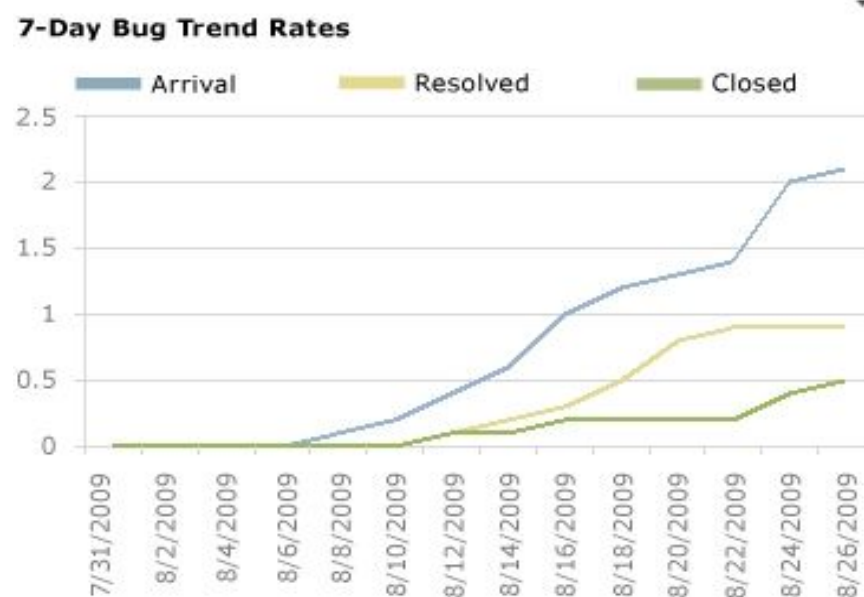
Which Excel report should you run?

- A. Bug Trends
- B. Bugs by Assignment
- C. Run the Team Trend report.
- D. Bug Progress

Answer: A

Explanation: You can use the Bug Trends report in Office Excel to track the rate at which the team is discovering, resolving, and closing Bugs. This report shows a moving average of Bugs that the team has discovered and resolved over time.

Example:



Bug Trends report

QUESTION: 3

You are using Microsoft Test Manager (MTM) to manage your testing efforts.

You plan to use the Recommended tests feature to assist in identifying tests to run against a Windows Presentation Foundation rich client application. When you select a new build, no recommended tests are displayed.

You need to configure the data collectors to enable the feature.

Which data collector should you configure?

- A. Action Log
- B. Test Impact
- C. IntelliTrace
- D. ASP.NET Client Proxy for IntelliTrace and Test Impact

Answer: B

Explanation:

To find the recommended tests, you must first run your manual tests using Test Runner or run your automated tests. When you run these tests, you have to use test settings that collect the test impact data. This test impact data contains information about which methods are called when you run your tests.

Reference: Visual Studio 2013, Which tests should be run since a previous build

QUESTION: 4

You are using Microsoft Test Manager (MTM) to perform exploratory testing.

You need to insert an image into the comment area for the test run.

What are two possible ways to accomplish this goal?

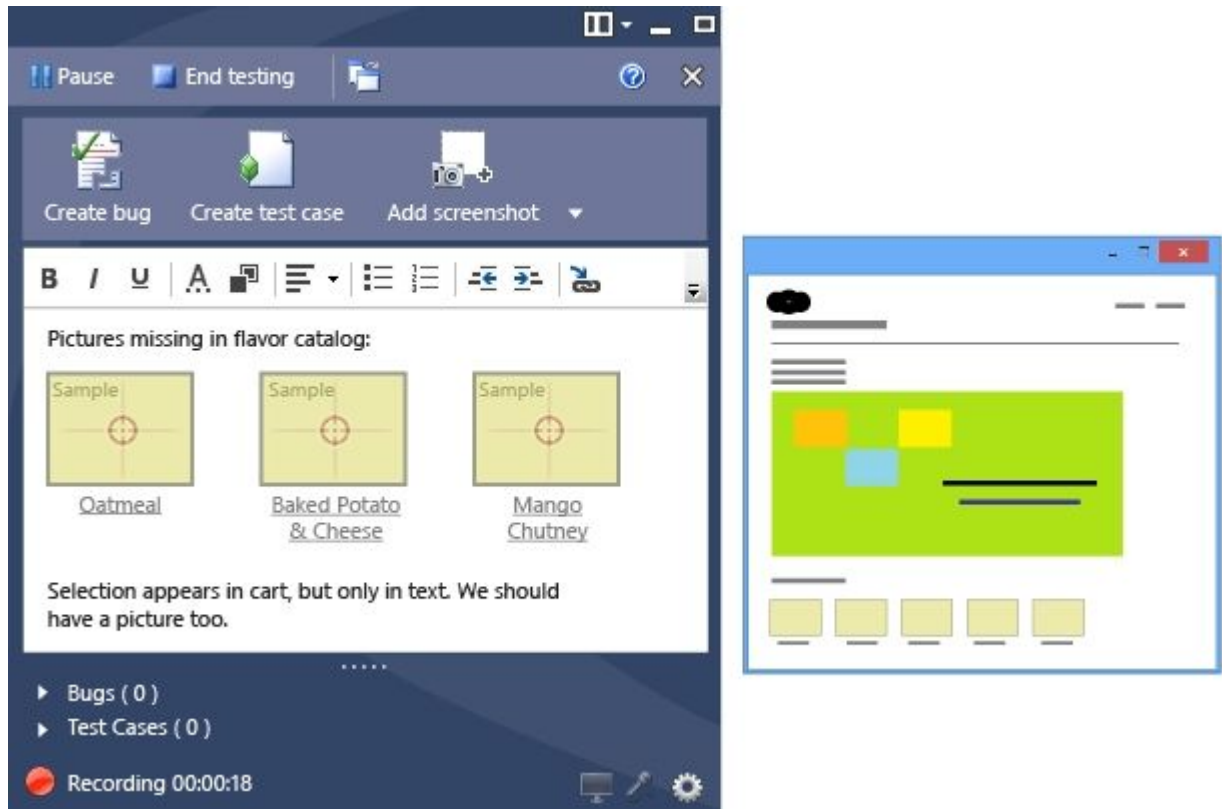
(Each correct answer presents a complete solution. Choose two.)

- A. Use the Add screenshot tool in the exploratory test runner and drag the selection box over the area of the screen you want to capture.
- B. Capture the image you want to insert by using your favorite screen capture utility and paste the image into the comment area of the exploratory testing window.
- C. Capture the image you want to insert by using your favorite screen capture utility and save the file to disk. Add the image as an attachment to the test run.
- D. Capture the image you want to insert by using your favorite screen capture utility. Drag and drop the file onto the comment area from the Windows Explorer.

Answer: A,C

Explanation:

A: While you work with the application, add comments and screenshots in



the Test Runner window.

C: * Microsoft Test Manager (MTM) helps you by recording the actions you perform as you work with your application. You can also record screenshots, comments, file attachments, audio narration and screen video.

QUESTION: 5

You are running a manual test using Microsoft Test Manager (MTM). You have chosen to create an action recording.

You want to pause the test run and exit the test runner.

Before you exit the test runner, you need to mark the test case as being in progress.

Which action should you perform in the test runner?

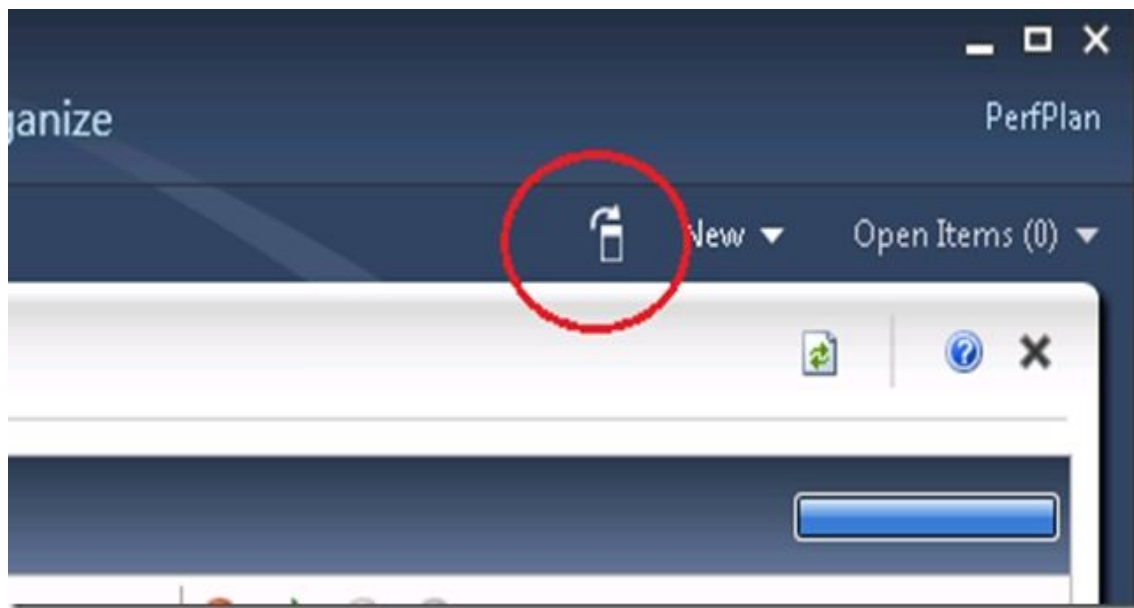
- A. Close
- B. Return to Testing Center
- C. Save
- D. Save and Close

Answer: B

Explanation:

I am running manual test using Test Runner. In here, I can pause the test and return to Testing Center. However, after I have done my work in Testing Center, how do I resume my test?

A) There is discoverability issue around here and many folks have stumbled on this. You can use the button highlighted below to go back to Test Runner.



image

QUESTION: 6

You are using Microsoft Test Manager (MTM) to run an automated test suite with 240 long-running tests.

In your test environment, you have set up four client machines to run these tests. You have assigned the Client role to all four machines.

You need to make sure that when you run the test suite, the tests are distributed equally over all four client machines.

What should you do?

- A. Add an even amount of RAM to all four machines.
- B. In the Test Controller Manager view, change the distribution property for the test controller to 4.

- C. In the Content view, configure the test suite to use all four environments.
- D. In the Test Controller Manager view, change the Weighting property for all four test agents to 60.

Answer: D

Explanation: Test Agent

The test agent runs as a service that listens for requests from the test controller to start a new test. When a request is received, the test agent service starts a process on which to run the tests. Each test agent runs the same load test. Test agents are assigned a weight by the administrator, and load is distributed according to a test agent's weighting. For example, if test agent 1 has a weighting of 30, and test agent 2 has a weighting of 70, and the load is set to 1000 users, then test agent 1 simulates 300 virtual users whereas test agent 2 simulates 700 virtual users.

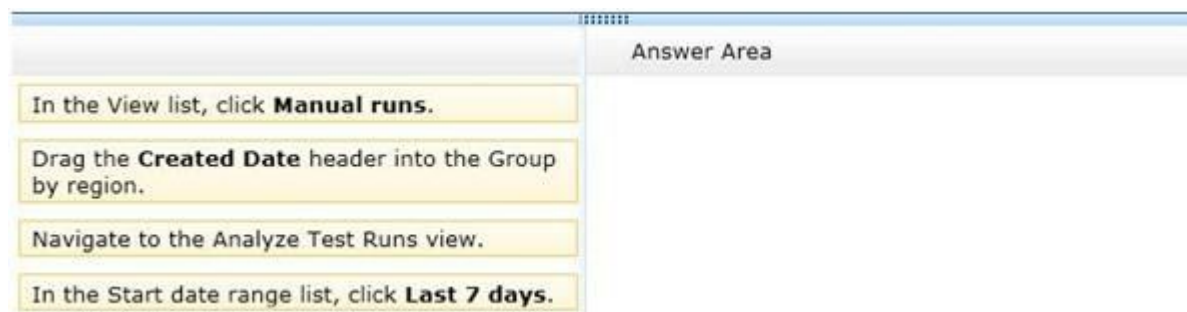
Reference: Configuring Test Controllers and Test Agents for Load Testing

QUESTION: 7

You are using Microsoft Test Manager (MTM) to manage your testing efforts.

You need to produce a list of manual test runs over the past week.

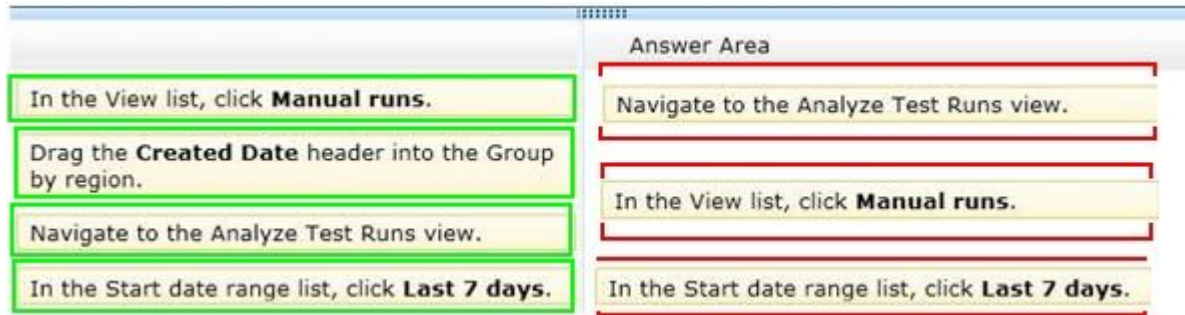
What should you do? (To answer, move the three appropriate actions from the list of actions to the answer area and arrange them in the correct order.)



The screenshot shows a software interface with a list of actions on the left and an 'Answer Area' on the right. The actions are:

- In the View list, click **Manual runs**.
- Drag the **Created Date** header into the Group by region.
- Navigate to the Analyze Test Runs view.
- In the Start date range list, click **Last 7 days**.

Answer:



QUESTION: 8

You are using Microsoft Test Manager (MTM). You are using the Microsoft Solution Framework (MSF) for Agile Software Development process template. Your TFS environment includes SharePoint Server 2010 Enterprise Edition and reporting integration.

You need to identify the number of bugs that are open and assigned to you.

What should you do?

- A. Open the Track tab in MTM and click the My Assigned Bugs link.
- B. Open the Bugs Dashboard and view the Bug Progress report.
- C. Open a Visual Studio 2012 Command prompt and run the ActiveBugList.exe command, pasting in username as a parameter.
- D. Open the Bugs Dashboard and view the Active Bugs by Assignment report.

Answer: D

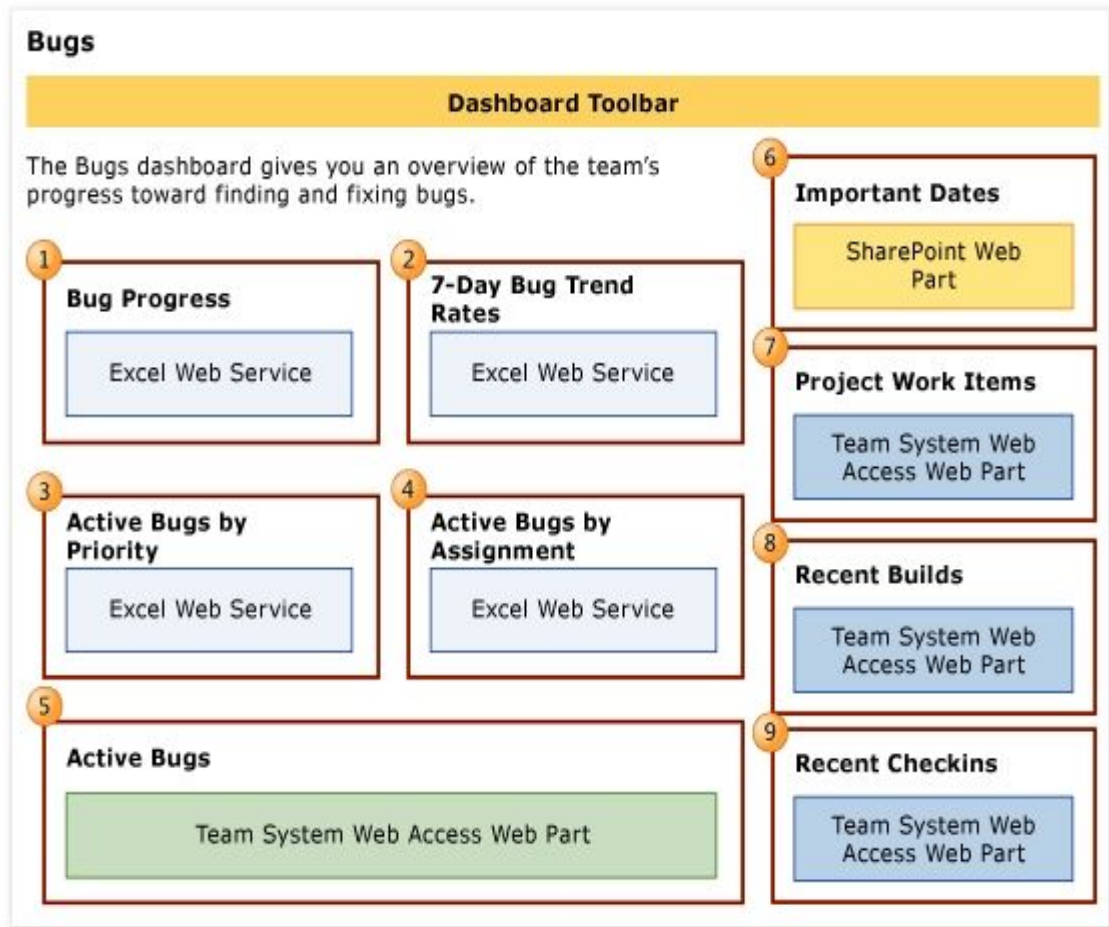
Explanation:

* By using the Bugs dashboard, the team can answer the following questions:

/ Is the number of active Bugs acceptable based on team goals? Is the team postponing too many Bugs?

/ Is the team finding, fixing, and closing Bugs quickly enough to meet expectations and at a rate that matches previous development cycles?

/ Is the team addressing high priority bugs before lower priority bugs? / Does any team member need help in resolving bugs? *



Bugs Dashboard

Reference: Bugs dashboard

QUESTION: 9

You are using Microsoft Test Manager (MTM) to manage your testing efforts.

You want to see which work items have changed since the last time you assigned a build to the test plan.

You need to assign a new build to the test plan and create a list of the bugs that have been fixed and the features that have been associated with the new build.

What should you do? (To answer, move the three appropriate actions from the list of actions to the answer area and arrange them in the correct order.)

	Answer Area
Select a build from the list of available builds.	
Use the Reset to active feature.	
Click Refresh .	
Navigate to the Assign build view.	
Use the Related tests feature.	
Click Assign to plan to accept the new build.	

Answer:

	Answer Area
Select a build from the list of available builds.	Navigate to the Assign build view.
Use the Reset to active feature.	
Click Refresh .	Select a build from the list of available builds.
Navigate to the Assign build view.	
Use the Related tests feature.	
Click Assign to plan to accept the new build.	Click Assign to plan to accept the new build.

QUESTION: 10

You use Microsoft Test Manager (MTM) to manage your test environments.

You plan to test an ASP.NET website on various topologies (such as one-tier, two-tier, three-tier, and n-tier) to ensure that the website supports scalability.

You need to be able to deploy copies of predefined environments based on templates.

What should you do?

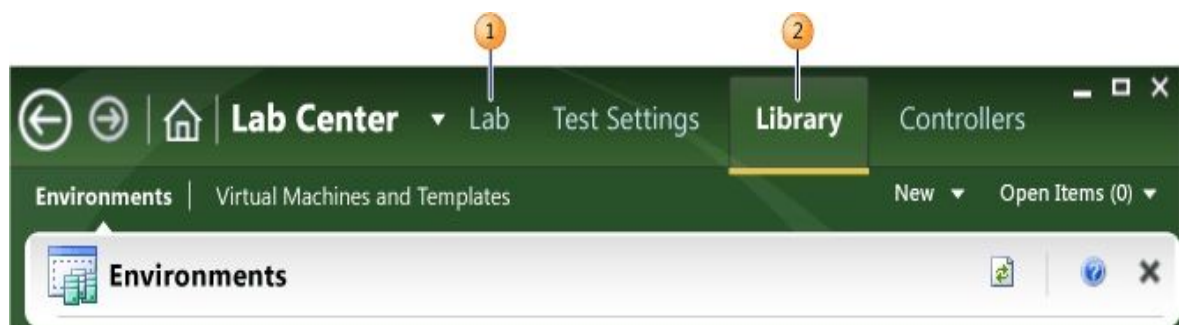
- A. Create a System Center Virtual Machine Manager (SCVMM) environment for each topology and store them in the library. Use the library to deploy new environments.
- B. Create new standard environments with physical machines.
- C. Create new physical environments using physical machines.

D. Create new standard environments with machines that run under System Center Virtual Machine Manager (SCVMM).

Answer: A

Explanation: / A virtual environment is a collection of virtual machines that is managed by Lab Management. You can run manual and automated tests from Microsoft Test Manager using this virtual environment. You can schedule Microsoft Team Foundation Build workflows to build, deploy, and test builds of your application onto virtual environments. Lab Management is integrated with Microsoft System Center Virtual Machine Manager (SCVMM) to enable you to efficiently create, store, and run these environments.

/ You manage Lab Management environments for a team project from the Lab and Library tabs of Test Manager.



Lab Management Lab and Library tabs

* The Lab tab provides access to the virtual environment and machines that are deployed on the host groups of a team project. A host group is a collection of one or more physical computers that are managed by Lab Management to host the environments. You interact with a host group as if it was a single computer.

* The Library tab provides access to stored environments, virtual machines, and templates that you use to create virtual environments in the team project Lab.