

考試編碼: 70-412

考試名稱: Configuring Advanced
Windows Server 2012 Services

版本: Demo

QUESTION: 1

Your company recently deployed a new Active Directory forest named contoso.com. The first domain controller in the forest runs Windows Server 2012 R2.

You need to identify the time-to-live (TTL) value for domain referrals to the NETLOGON and SYSVOL shared folders.

Which tool should you use?

- A. Ultrasound
- B. Replmon
- C. Dfsdiag
- D. Frsutil

Answer: C

QUESTION: 2

HOTSPOT

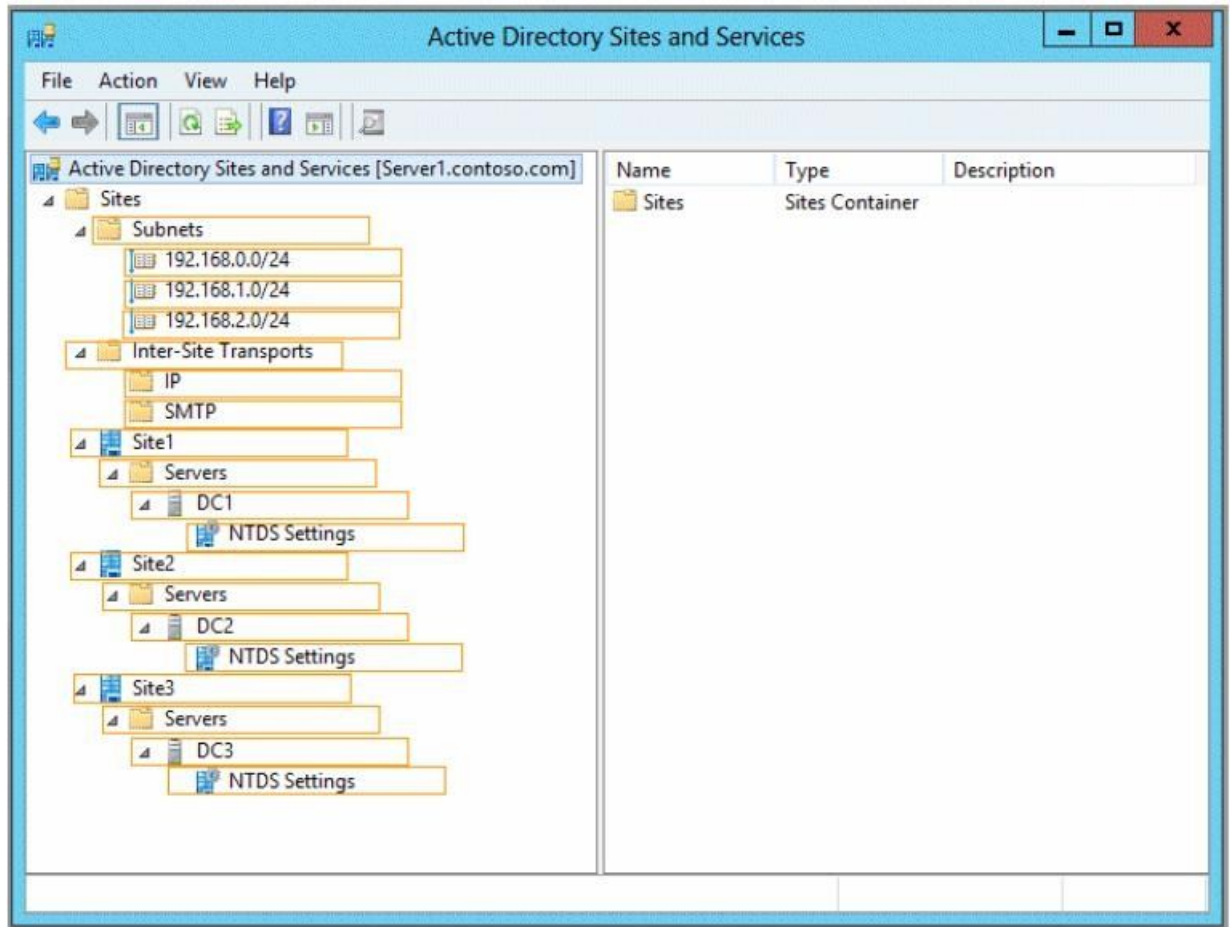
Your network contains an Active Directory forest named contoso.com that contains a single domain. The forest contains three sites named Site1, Site2, and Site3.

Domain controllers run either Windows Server 2008 R2 or Windows Server 2012 R2. Each site contains two domain controllers. Site1 and Site2 contain a global catalog server.

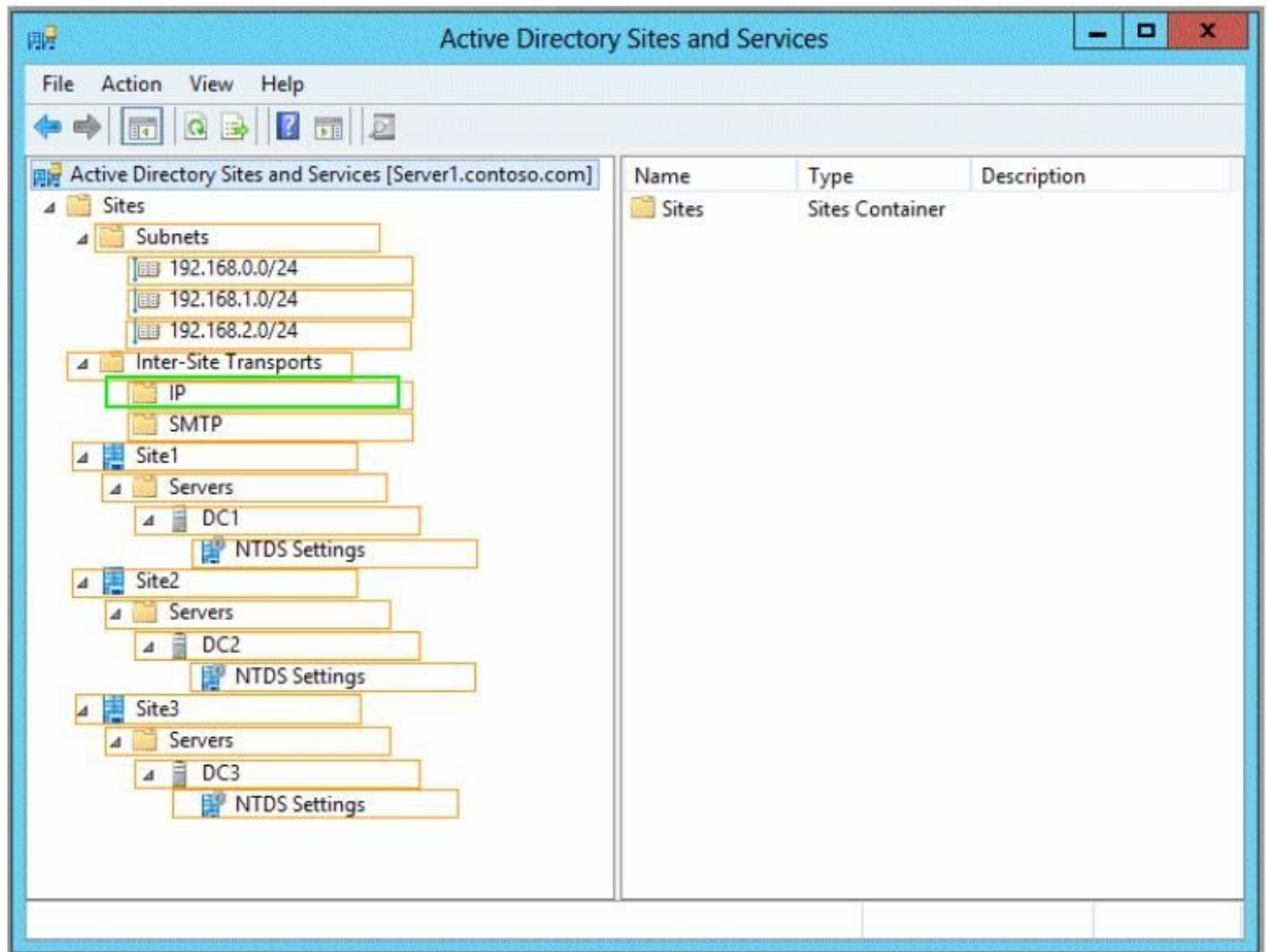
You need to create a new site link between Site1 and Site2. The solution must ensure that the site link supports the replication of all the naming contexts.

From which node should you create the site link?

To answer, select the appropriate node in the answer area.



Answer:



QUESTION: 3

Your network contains two Active Directory forests named contoso.com and adatum.com.

Contoso.com contains one domain. Adatum.com contains a child domain named child.adatum.com.

Contoso.com has a one-way forest trust to adatum.com. Selective authentication is enabled on the forest trust.

Several user accounts are migrated from child.adatum.com to adatum.com.

Users report that after the migration, they fail to access resources in contoso.com. The users successfully accessed the resources in contoso.com before the accounts were migrated.

You need to ensure that the migrated users can access the resources in contoso.com.

What should you do?

- A. Replace the existing forest trust with an external trust.
- B. Run netdom and specify the /quarantine attribute.
- C. Disable SID filtering on the existing forest trust.
- D. Disable selective authentication on the existing forest trust.

Answer: C

QUESTION: 4
HOTSPOT

Your network contains an Active Directory domain named contoso.com. The domain contains domain controllers that run either Windows Server 2003, Windows Server 2008 R2, or Windows Server 2012 R2.

You plan to implement a new Active Directory forest. The new forest will be used for testing and will be isolated from the production network.

In the test network, you deploy a server named Server1 that runs Windows Server 2012 R2.

You need to configure Server1 as a new domain controller in a new forest named contoso.test.

The solution must meet the following requirements:

The functional level of the forest and of the domain must be the same as that of contoso.com.

Server1 must provide name resolution services for contoso.test.

What should you do?

To answer, configure the appropriate options in the answer area.

Active Directory Domain Services Configuration Wizard

TARGET SERVER
Server1

Domain Controller Options

- Deployment Configuration
- Domain Controller Options**
- Additional Options
- Paths
- Review Options
- Prerequisites Check
- Installation
- Results

Select functional level of the new forest and root domain

Forest functional level:

Domain functional level:

Specify domain controller capabilities

- Domain Name System (DNS) server
- Global Catalog (GC)
- Read only domain controller (RODC)

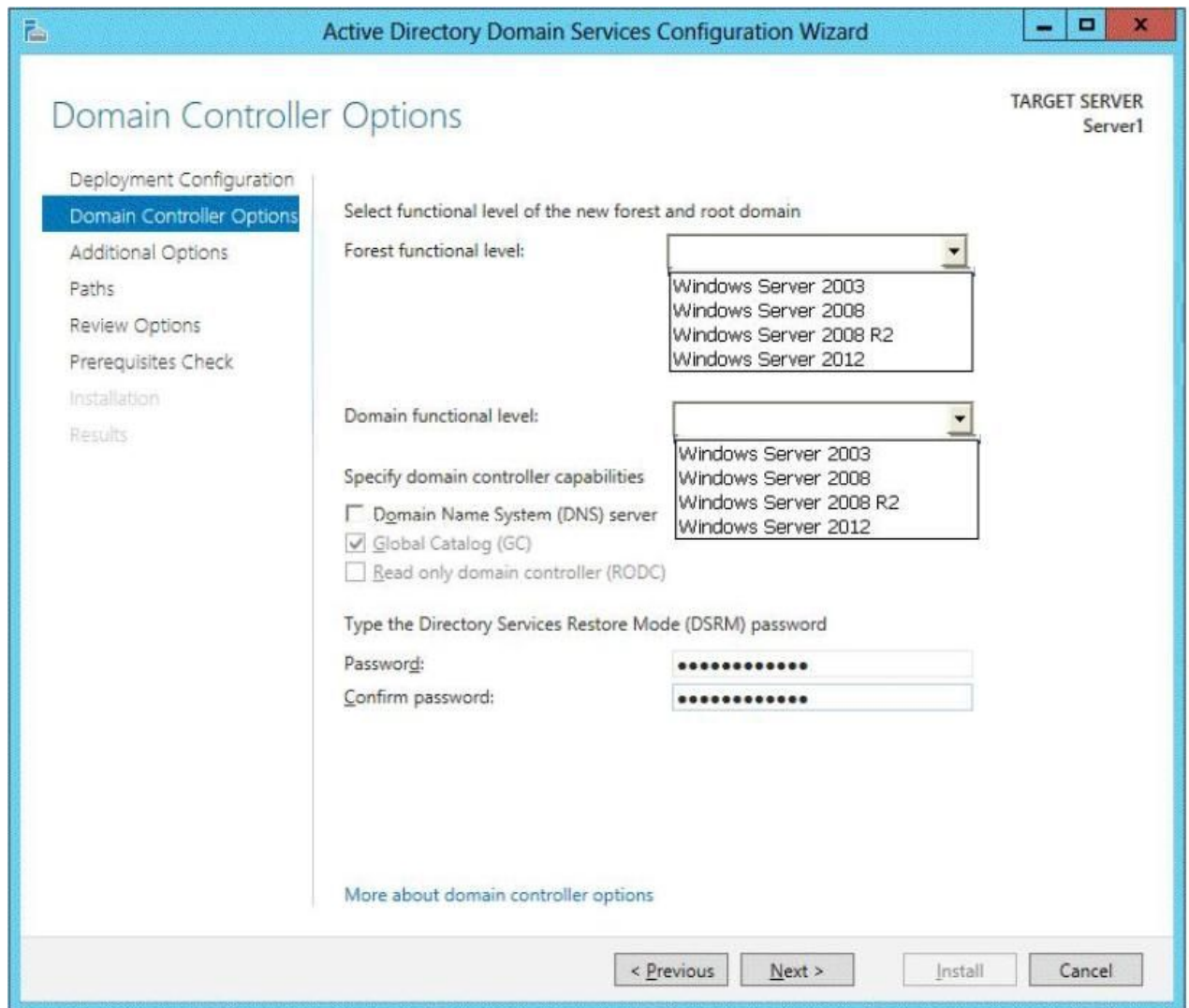
Type the Directory Services Restore Mode (DSRM) password

Password:

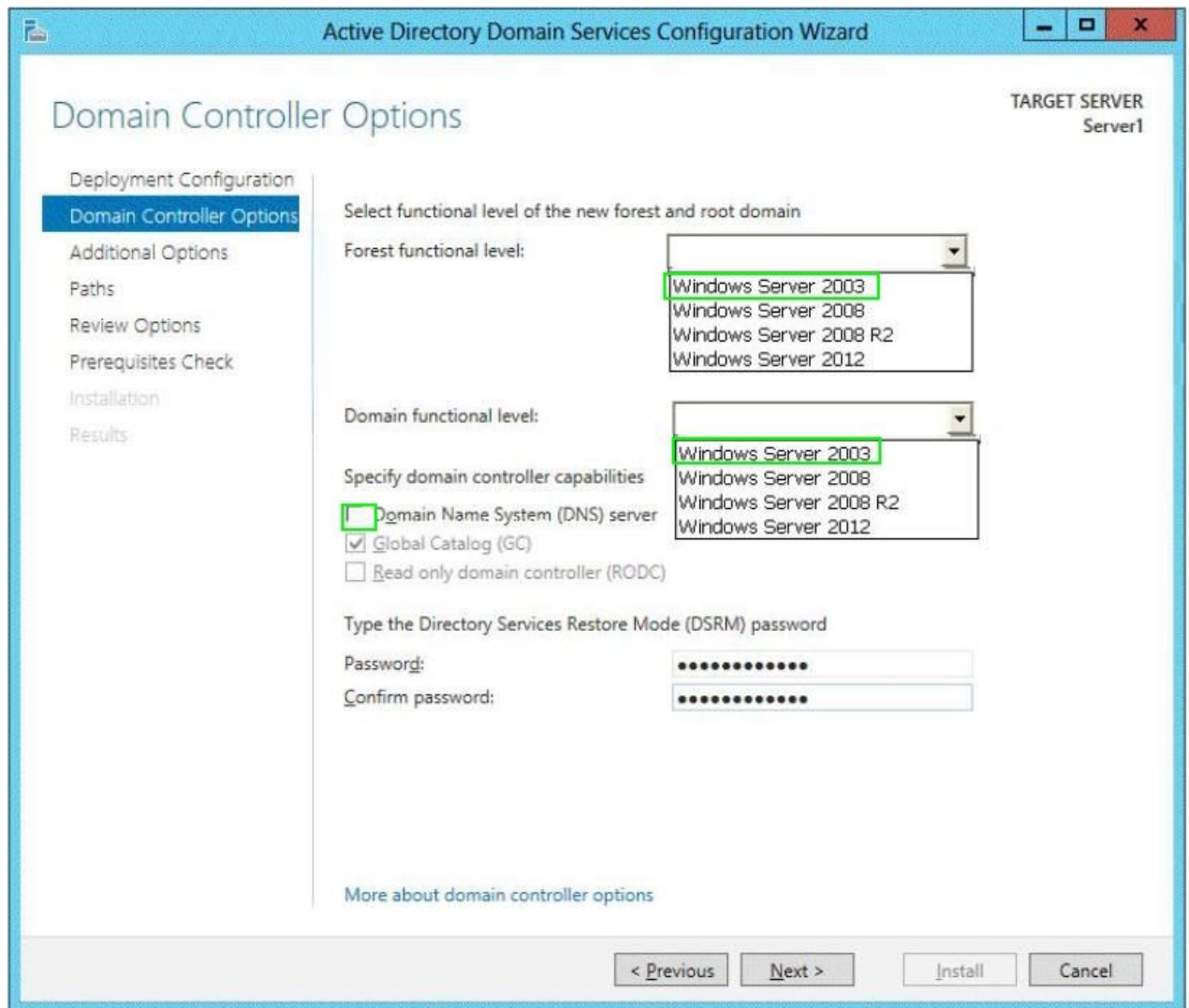
Confirm password:

[More about domain controller options](#)

< Previous Next > Install Cancel



Answer:



QUESTION: 5

Your network contains an Active Directory forest named adatum.com. The forest contains a single domain. The domain contains four servers. The servers are configured as shown in the following table.

Server name	Configuration	Operating system
DC1	<ul style="list-style-type: none"> • Global catalog server • Domain controller • Schema master • DNS server 	Windows Server 2003 R2
DC2	<ul style="list-style-type: none"> • Domain controller • PDC emulator • DHCP server • DNS server 	Windows Server 2003 R2
DC3	<ul style="list-style-type: none"> • Infrastructure master • Global catalog server • Domain controller • WINS server 	Windows Server 2008 R2
Server1	<ul style="list-style-type: none"> • Member server • WINS server • DNS server 	Windows Server 2003 R2

You need to update the schema to support a domain controller that will run Windows Server 2012 R2.

On which server should you run adprep.exe?

- A. Server1
- B. DC3
- C. DC2
- D. DC1

Answer: B

QUESTION: 6

HOTSPOT

Your network contains three Active Directory forests. The forests are configured as shown in the following table.

Forest name	Forest functional level
Contoso.com	Windows Server 2012 R2
Division1.contoso.com	Windows Server 2012 R2
Dvision2.contoso.com	Windows Server 2012 R2

A two-way forest trust exists between contoso.com and division1.contoso.com. A two-way forest trust also exists between contoso.com and division2.contoso.com.

You plan to create a one-way forest trust from division1.contoso.com to division2.contoso.com.

You need to ensure that any cross-forest authentication requests are sent to the domain controllers in the appropriate forest after the trust is created.

How should you configure the existing forest trust settings?

In the table below, identify which configuration must be performed in each forest. Make only one selection in each column. Each correct selection is worth one point.

	Division1.contoso.com	Division2.contoso.com
Add division1.contoso.com as a name suffix routing entry.	<input type="radio"/>	<input type="radio"/>
Add division2.contoso.com as a name suffix routing entry.	<input type="radio"/>	<input type="radio"/>
Add division1.contoso.com as an exclusion to the name suffix routing entry of contoso.com.	<input type="radio"/>	<input type="radio"/>
Add division2.contoso.com as an exclusion to the name suffix routing entry of contoso.com.	<input type="radio"/>	<input type="radio"/>

Answer:

	Division1.contoso.com	Division2.contoso.com
Add division1.contoso.com as a name suffix routing entry.	<input type="radio"/>	<input checked="" type="radio"/>
Add division2.contoso.com as a name suffix routing entry.	<input type="radio"/>	<input type="radio"/>
Add division1.contoso.com as an exclusion to the name suffix routing entry of contoso.com.	<input type="radio"/>	<input type="radio"/>
Add division2.contoso.com as an exclusion to the name suffix routing entry of contoso.com.	<input checked="" type="radio"/>	<input type="radio"/>

QUESTION: 7

Your network contains an Active Directory forest named contoso.com. The forest contains three domains. All domain controllers run Windows Server 2012 R2.

The forest has a two-way realm trust to a Kerberos realm named adatum.com.

You discover that users in adatum.com can only access resources in the root domain of contoso.com.

You need to ensure that the adatum.com users can access the resources in all of the domains in the forest.

What should you do in the forest?

- A. Delete the realm trust and create a forest trust.
- B. Delete the realm trust and create three external trusts.
- C. Modify the incoming realm trust.
- D. Modify the outgoing realm trust.

Answer: D

QUESTION: 8

Your network contains an Active Directory forest named contoso.com. The forest contains two domains named contoso.com and child1.contoso.com. The domains contain three domain controllers.

The domain controllers are configured as shown in the following table.

Domain controller name	Operating system	Configuration
dc1.contoso.com	Windows Server 2008 R2	Schema master Domain naming master
dc10.child1.contoso.com	Windows Server 2012	PDC emulator
dc11.child1.contoso.com	Windows Server 2008 R2	RID master

You need to ensure that the KDC support for claims, compound authentication, and kerberos armoring setting is enforced in the child1.contoso.com domain.

Which two actions should you perform? (Each correct answer presents part of the solution.

Choose two.)

- A. Upgrade DC1 to Windows Server 2012 R2.
- B. Upgrade DC11 to Windows Server 2012 R2.
- C. Raise the domain functional level of child1.contoso.com.
- D. Raise the domain functional level of contoso.com. E. Raise the forest functional level of contoso.com.

Answer: B,C

Explanation:

If you want to create access control based on claims and compound authentication, you need to deploy Dynamic Access Control. This requires that you upgrade to Kerberos clients and use the KDC, which support these new authorization types. With Windows Server 2012 R2, you do not have to wait until all the domain controllers and the domain functional level are upgraded to take advantage of new access control options <http://technet.microsoft.com/en-us/library/hh831747.aspx>.

QUESTION: 9

Your network contains an Active Directory domain named contoso.com. All domain controllers run Windows Server 2012 R2. The domain contains two domain controllers.

The domain controllers are configured as shown in the following table.

Domain controller name	Site name	Configuration
DC1	Main	Domain controller
DC10	Branch	Read-only domain controller (RODC)

You configure a user named User1 as a delegated administrator of DC10.

You need to ensure that User1 can log on to DC10 if the network link between the Main site and the Branch site fails.

What should you do?

- A. Add User1 to the Domain Admins group.
- B. On DC10, modify the User Rights Assignment in Local Policies.
- C. Run repadmin and specify the /prp parameter.

D. On DC10, run ntdsutil and configure the settings in the Roles context.

Answer: C

Explanation:

repadmin /prp will allow the password caching of the local administrator to the RODC.

QUESTION: 10

Your company has offices in Montreal, New York, and Amsterdam.

The network contains an Active Directory forest named contoso.com. An Active Directory site exists for each office. All of the sites connect to each other by using the DEFAULTIPSITE1INK site link.

You need to ensure that only between 20:00 and 08:00, the domain controllers in the

Montreal office replicate the Active Directory changes to the domain controllers in the Amsterdam office.

The solution must ensure that the domain controllers in the Montreal and the New York offices can replicate the Active Directory changes any time of day.

What should you do?

A. Create a new site link that contains Montreal and Amsterdam. Remove Amsterdam from DEFAULTIPSITE1INK. Modify the schedule of DEFAULTIPSITE1INK.

B. Create a new site link that contains Montreal and Amsterdam. Create a new site link bridge. Modify the schedule of DEFAULTIPSITE1INK.

C. Create a new site link that contains Montreal and Amsterdam. Remove Amsterdam from DEFAULTIPSITE1INK. Modify the schedule of the new site link.

D. Create a new site link that contains Montreal and Amsterdam. Create a new site link bridge. Modify the schedule of the new site link.

Answer: C

Explanation:

Very Smartly reworded with same 3 offices. In the exam correct answer is "Create a new site link that contains Newyork to Montreal. Remove Montreal from DEFAULTIPSITE1INK.Modify the schedule of the new site link".
[http://technet.microsoft.com/en-us/library/cc755994\(v=ws.10\).aspx](http://technet.microsoft.com/en-us/library/cc755994(v=ws.10).aspx)