

考試編碼:1Y0-A20

**考試名稱: Citrix XenApp 6.5
Administration**

版本: Demo

QUESTION 1

Scenario: A XenApp administrator must recommend a database option for the new XenApp 6.5 data store. The new farm will have more than 100 XenApp servers and 500 published resources, support more than 5,000 concurrent users and have two zones separated by a WAN connection.

Which two database options should be administrator recommend? (Choose two.)

- A. IBM DB2 9.7
- B. Oracle Enterprise 1.1
- C. Microsoft SQL Server 2008
- D. Microsoft SQL Server Express 2008

Answer: BC

Explanation/Reference:

SQL Express is a free version that only supports small environments. Obviously 100 xenapp servers, 500 published applications, 5,000 concurrent users is a large environment.

QUESTION 2

Scenario: The administrator of a small XenApp server farm has configured end-to-end encryption between the XenApp servers and user devices by setting up Access Gateway VPX. Session Reliability is enabled in the farm with default settings.

Over which port will published applications be delivered?

- A. 80
- B. 443
- C. 1494
- D. 2598

Answer: B

Explanation/Reference:

I think the answer should be 443 because of the CAG vpx is set up and then all traffic is ported to 443. Also the 2598 traffic is directed to 443.

http://support.citrix.com/servlet/KbServlet/download/2389-102-654859/CitrixPorts_by_Port_1103.pdf

Next article is for CAG8 but the trafficflow is still the same.

<http://support.citrix.com/article/CTX113250>

QUESTION 3

Scenario: The administrator of a XenApp Enterprise Edition server farm is configuration Single Sign-on for the users of the farm. The Citrix license server was installed with the default vendor daemon and console Web port numbers, but NOT the default license server port number.

Of the port numbers that are in use in the XenApp server farm, which one should the administrator specify for the license server during Single Sign-on configuration?

- A. 443
- B. 7279
- C. 8082
- D. 27009

Answer: D

Explanation/Reference:

v4 - updated

This is a trick question.

By default the daemon and console use ports 7279, and 8082, so answers B and C are incorrect, because you can't have 2 things using the same port

By default the license server uses 27000, and as you can see below, by default SSO uses 27000, but the question says 27000 was NOT used. Since 443 requires certificates and the question doesn't mention that, the only possible port left is 27009

User Configuration Wizard [X]

CITRIX

Configure licensing
Select licensing model and license server communication for this user configuration.

Steps

- ✓ Name user configuration
- ✓ Select product edition
- ✓ Specify Domain Controller
- ✓ Choose applications
- ✓ Configure plug-in interaction
- ▶ **Configure licensing**
 - Select data protection methods
 - Select secondary data protection
 - Enable self-service features
 - Locate service modules
 - Key Management Module
 - Provisioning Module
 - Confirm settings

Specify the license server name, port number, and licensing model for this user configuration. For licensing information, see [Citrix eDocs](#)

License server address

License server name:

Use default port Port number:

Licensing model

Named User Licensing

Disconnected mode period: days hours minutes

Concurrent User Licensing (Enterprise and Platinum Edition only)

Allow license to be consumed for offline use

Disconnected mode period: days hours minutes

Continue without validating licensing information

Quick Help:

Specifies the name and port number of your Citrix License Server. If the license server information is unavailable, Single Sign-On Plug-in will not function.

License server port number is 27000
 Vendor daemon port number is 7279
 Console Web port is 8082

License Server Configuration Tool

CITRIX

License Server Configuration

Specify the numbers for the following ports:

License Server Port (default 27000):

Vendor Daemon Port (default 7279):

Management Console Web Port (default 8082):

Set a password for the License Administration Console:

Username: admin

Password:

Confirm Password:

OK Cancel

<http://support.citrix.com/article/CTX125774>

<http://support.citrix.com/proddocs/topic/licensing-119/lic-install.html>

QUESTION 4

In building out a new XenApp environment, an administrator places the Secure Gateway and Web Interface in the DMZ. What must the administrator do to secure the traffic to the XML Broker?

- A. Change the XML traffic port to a non-standard assignment.
- B. Use the SSL Relay tool to encrypt traffic to the XML Broker in the farm.
- C. Place the XML Broker in the DMZ and encrypt the traffic between them.
- D. Use encrypted ICA to communicate between the XML Broker and the Web Interface.

Answer: B

QUESTION 5

www.exam24.net original question and answer

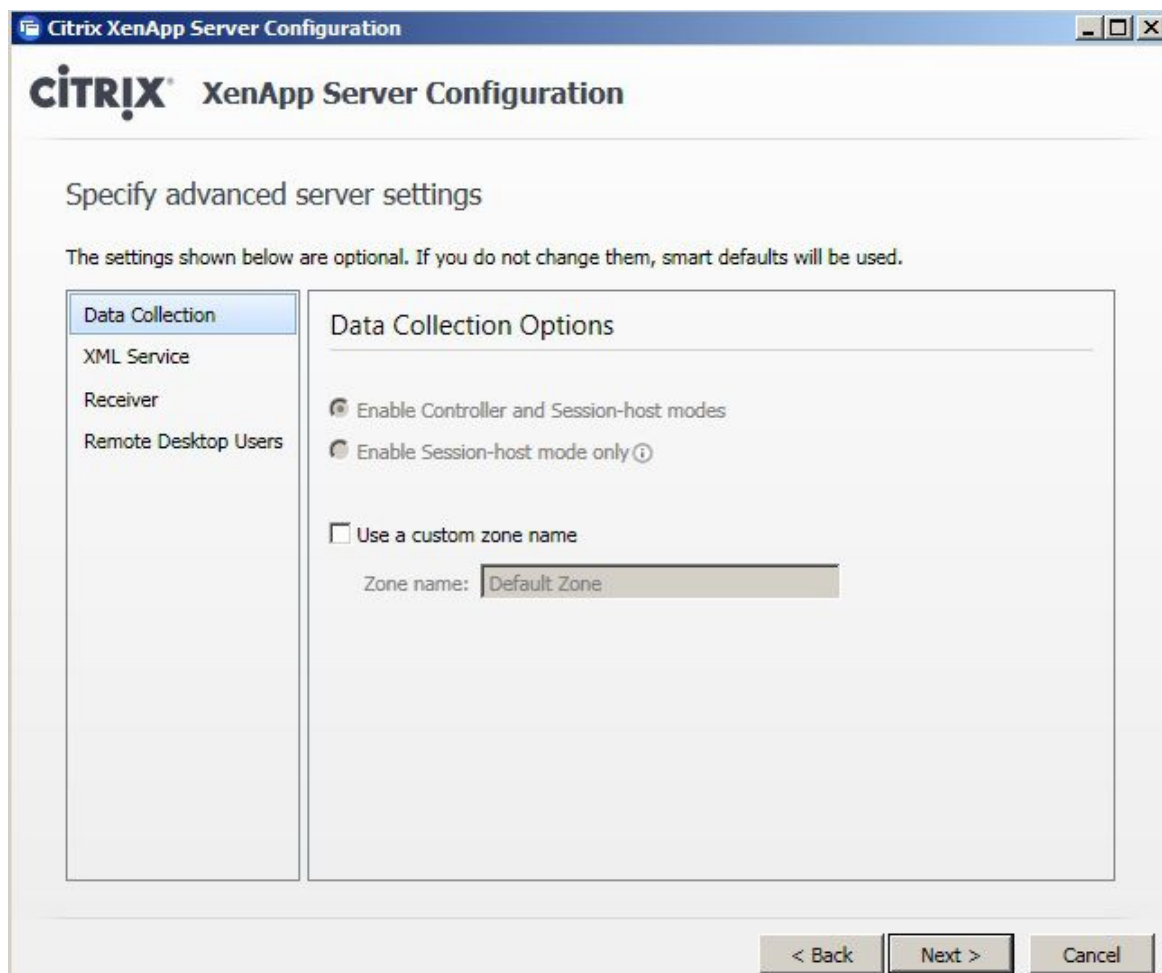
An administrator needs to install a XenApp 6.5 server to act as an additional dedicated data collector. After installing XenApp on the new server, the next step is to configure it by enabling the _____.

- A. Session-host mode only
- B. Controller and Session-host modes
- C. data collector and XML Broker host mode
- D. data collector and XTE Service host mode

Answer: B

Explanation/Reference:

Only during setup you can set the setup type: select session-host only (doesnt act as a data collector) or controller and session-host. Option C&D are invalid.



QUESTION 6

Scenario: An administrator manages a XenApp farm that uses Citrix Provisioning Services to automate the addition of XenApp servers to the farm. The administrator must implement a solution to automate the addition of new servers to the published resources, load evaluators, Citrix policies and load balancing policies.

Which two should the administrator configure to meet the requirements of the scenario?

(Choose two.)

- A. Zones
- B. Policies
- C. Worker group
- D. Load evaluators

Answer: BC

Explanation/Reference:

A worker group is a list of xenapp servers. Rather than manually adding new servers to a published application, for example, you could simply use a worker group and when you add a new xenapp server to a worker group, it's automatically added to any published applications that use that group.

QUESTION 7

Which Citrix service should an administrator monitor when troubleshooting issues with Session Reliability?

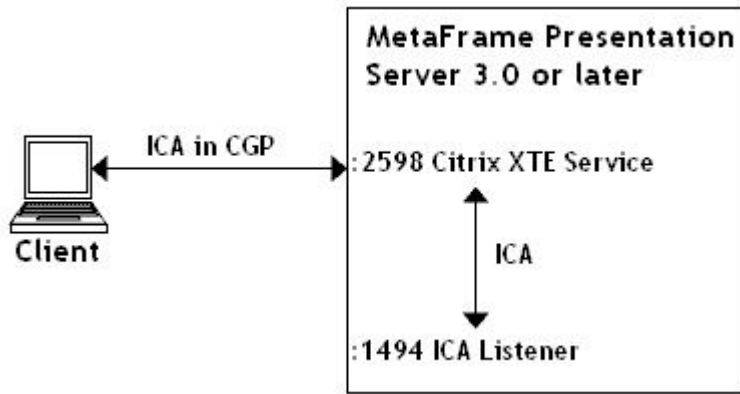
- A. IMA
- B. XML
- C. XTE
- D. MFCOM

Answer: C

Explanation/Reference:

Session Reliability is performed by the XTE service

<http://support.citrix.com/article/CTX104147>



QUESTION 8

Scenario: An administrator has finished installing the first server in a new farm and is now creating the data store. The farm will consist of five servers and needs to support about 50 users. The company wants this installation to be as cost-effective as possible.

What is the best option for a database system that would support this farm effectively?

- A. Microsoft Access
- B. Microsoft SQL Server
- C. Oracle Database System
- D. Microsoft SQL Server Express

Answer: D

Explanation/Reference:

50 users is a small environment, therefore SQL Express would be the best choice. Notice the question asks "most cost-effective" - SQL Express is FREE

<http://support.citrix.com/proddocs/topic/xenapp65-planning/ps-planning-datastore-intro-v2.html>

	Small	Medium	Large	Enterprise
Servers	1-50	25-100	50-100	100 or more
Named Users	< 150	< 3000	< 5000	> 3000
Applications	< 100	< 100	< 500	< 2000

Microsoft SQL Server and Oracle are suitable for any size environment and are recommended for all large and enterprise environments. When deploying large farms across a WAN, you can obtain a performance advantage by replicating the data store and distributing the load over multiple database servers. SQL Server and Oracle are suitable for large farms and support replication.

Do not install XenApp on the SQL Server or Oracle database server.
SQL Server Express is suitable for all small and many medium environments located in one physical location, which do not have branch offices across a WAN.

QUESTION 9

In order for an administrator to download a license from the company's mycitrix.com portal, the administrator must be added _____.

- A. as a Citrix Administrator in the AppCenter
- B. into the contacts for the company in mycitrix.com
- C. to the Purchasing Active Directory group in the company
- D. as a Domain Administrator in the company's Active Directory

Answer: B

Explanation/Reference:

<http://support.citrix.com/article/CTX130126>

You must be logged on to MyCitrix with a user name and password associated to an Administrator of the account where you need to make the restricted toolboxes available to other contacts.

When allowing contacts to access unrestricted toolboxes, all contacts within the account are able to view or use the toolboxes. The system does not allow an administrator to select only certain contacts to view these toolboxes. The access is available to all or to none. If you need to allow only certain contacts access and do not want to provide all contacts access, Citrix recommends that you add such contacts to the Administrators group.

QUESTION 10

Scenario: A farm contains six servers with one shared data collector that has a custom load balancing policy to limit the number of connections. An administrator needs to add more users to the farm, which will result in adding on four more servers for a total of 10. As most users in the farm use a CAD application, the administrator understands that resource needs will increase.

Which step should the administrator take to maintain farm integrity?

- A. Dedicate two new servers as data collectors and set them as Most Preferred in the election.
- B. Dedicated one new server as the dedicated data collector and the current data collector as its backup.

- C. Dedicate three new servers as shared data collectors and assign Most Preferred in the election panel.
- D. Dedicate a new server as a second shared data collector and assign Most Preferred in the election panel.

Answer: B